

grouping

Quick-group

From off, hold button for ~10 sec. until light flashes white. Let go. THAT'S IT! This creates a unique group with any other "flowtoys connect" light in quick-group. There is no limit to how many can join the group.

This is what you see as you hold the button:

- > battery level indicator
 - > lights turn on to most recent mode - keep holding!
 - > flashing white followed by solid white.
- You can let go when it starts flashing white. You can do this one prop at a time, as long all props you wish to group are in white at the same time.

For advanced grouping like joining public groups & adding members, visit: flowtoys.com/product-support

kinetic awareness

Accelerometer detects motion, speed, bumps, stalls, spin duration & more. Different modes have different reactions, including pulses, brightness, color & pattern changes.

power

Check your battery charge level: From off, hold button. The light will blink its battery level color:
Red: low || **Orange: ok** || **Yellow: good** || **Green: great**

Low battery mode: When the battery gets low, your light will exhibit a dim red flicker for awhile, so it doesn't go totally dark immediately.

Battery life can vary greatly depending on brightness level, mode and whether light is moving or static!

Welcome to flowOS

first released in 2006, flowOS is the most refined & advanced LED prop operating system available.

the basic flowOS is simple, just press the button for 11 amazing modes. You can access more modes and advanced features with a few key button presses. flowOS runs on most flowtoys lights and will be our primary UI for many years to come.

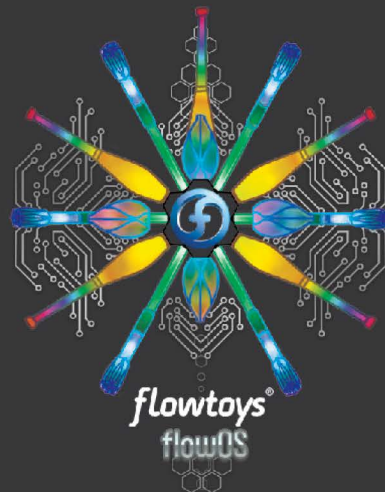
Keep this pocket guide handy to help you navigate the amazing features in your flowOS props.

You can update your firmware over USB to get the latest features as we develop them.

Check for firmware updates,
how-to-videos & more
comprehensive instructions at:
flowtoys.com/product-support

flowtoys®
flowOS

2021.10



intuitive 1-button interface
60-80+ customizable modes
kinetic awareness :: motion response
connect, sync & control wirelessly
usb rechargeable & programmable

flowOS Navigation


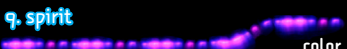
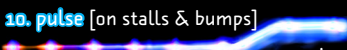
	when OFF	when ON	when in "adjust"
Press	—	next mode	select
Click 2x	▬▬	p2m1	p2m1
Click 3, 4 or 5x	▬▬▬	p3, p4 or p5	p3, p4 or p5
Click 6x	▬▬▬▬	p1m1	p1m1
Long press	●	battery level	randomize
Hold	●	battery level	turn off
Long hold	●	solo on	solo off
Hold to Save	●	battery level	save

For more details & video how-tos, go to www.flowtoys.com/product-support

these graphics give us a feel for each mode's default pattern

page 1 :: **play** :: press 1x or click 6x

adjust type

1. rainbow  effect
2. rainbow drops  effect
3. bold  color
4. lantern  brightness
5. fire  color
6. water  color
7. earth  color
8. air  color
9. spirit  color
10. pulse [on stalls & bumps]  color

details of each pattern vary depending on your prop & movement

page 2 :: **party** :: click 2x


adjust type

1. candy  effect
2. petals  effect
3. love  color
4. watermelon  color
5. freedom  color
6. microdots  effect
7. unicorn  effect
8. blue blazer  color
9. solar flare  color
10. strobe  effect

for mode images, detailed adjusts & kinetic responses, visit flowtoys.com/product-support

page 3 :: **perform** :: click 3x

adjust type

1. flamebow  effect
2. alicorn  effect
3. liquid sugar  effect
4. rainbow dash  effect
5. fireball  color
6. froth  color
7. jammin'  color
8. bolder  color
9. sunset  color
10. daybreak  color

page 4 :: favorites

- 4 quick clicks takes you to "favorites". Here you'll find your most recently saved modes.
- To delete a favorite: hold past "save" until you see 5x red flashes.
- Create looks & scenes by saving different adjustments/modes to different lights/props.
- Favorites is an advanced feature with many more possibilities for customization & programming: visit flowtoys.com/product-support for details.

page 5 :: settings

- Each mode in page 5 is a setting that can be adjusted.
 - Settings apply to all modes.
 - There are 10 settings - some are in development.
- Check flowtoys.com/product-support for updates!

mode1: grouping	mode6: tbd ⁺
mode2: brightness	mode7: tbd ⁺
mode3: white balance	mode8: tbd ⁺
mode4: kinetic response ⁺	mode9: tbd ⁺
mode5: auto-sleep/wake	mode10: factory default*
mode11: random autoplay	reset doesn't delete favorites

Adjusting a setting:

- Most settings have 5 levels to choose from. The light will blink 1-5 times to indicate the level. "Adjust" and "select" for temp-use. "Save" to keep the setting.

* To reset: hold past save until you see 5x red flashes.

⁺Coming soon

pages 1-4 :: last mode is **autoplay** :: cycle through all the modes on that page + adjust the timing between modes!