

Continue clicking to see all the 7 solid colors and 7 dotted colors.

3. To choose the first color(1 of 3), stop on the color you want and double click(the wand will flash twice for confirmation). Select your 2nd and 3rd color by this process. Hold for 3 seconds to quit the customized mode and turn off.

After you picked 3 colors, the customized mode will automatically start. The wand will quit the customized mode and turn off if no operation for 30 seconds.

Every time you create a new customized mode, the old customized mode will be overwritten. The customized mode will also return to default setting when you recharge.

ASSEMBLING THE WAND

STEP 1.

Insert* top piece with the Wandini Logo on it into the end of the middle section that also has the logo.



Insert* the bottom piece into the other end.

STEP 2.



MAKE MAGIC HAPPEN

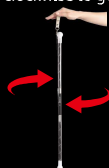
STEP 1.

Insert middle finger into leather loop, and slowly let Wandini hang straight vertically, with the Wandini logo end at the top.



STEP 2.

Put your arm straight out with Wandini hanging vertically. Once it's still, move your hand in wide, circular motions, so the string rotates around the wand. Try it clockwise and counter-clockwise to get comfortable.



This is just the starting trick!

You need to prevent your Wandini from hitting the string or your body, so it stays in the straight vertical position for the best illusion. Wandini comes set up for Short String tricks. For more advanced users we do offer long string separately at our website: Funinmotiontoys.com

RECHARGING THE WAND

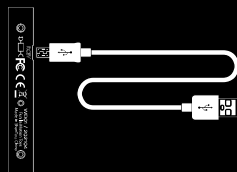
CHARGE BEFORE USE - The Wandini is rechargeable with micro USB cable included in the kit. Plug the Micro USB head into the USB port and connect the other end to a proper adapter (not included). Each Wandini is equipped with a rechargeable lithium battery (model number is 10400) with capacity of 280mA and voltage of 3.7V.

- Charges fully in as fast as 2 hours (with 2A adapter)

1. Wand will turn RED when charging.
2. Wand will turn GREEN when fully charged.

- Maximum battery life: 10.5 hours (solid blue mode)

- Minimum battery life: 3.5 hours (solid white mode)

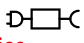




DISPOSING THE TOY

Please help the environment by disposing of your product responsibly at the end of its life. The wheeled bin symbol indicates that this product should not be disposed of in your household waste containers. Instead, the product should be disposed of by using a designated collection point for the recycling of waste electrical and electronic equipment, The Waste of Electrical and Electronic Equipment (WEEE) Directive (2002/96/EC) requires that the best available recycling techniques be employed to minimize the impact on the environment. Recycling electronics helps by keeping harmful chemicals out of the environment, and also saves money by reusing precious metals. Remove any batteries and dispose of them and the product at your local authority's recycling facility. For more information about where you can drop off your waste equipment for recycling, please contact your local city office, your household waste disposal service or the location where you purchased this product.

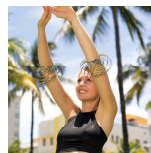


WARNING :

- For the purpose of recharging the battery, only use the detachable USB charging cable provided with this toy.
- This toy is only to be connected to equipment bearing either of the following symbols:   
- For electric toys using rechargeable batteries, the batteries should be charged under adult supervision.
- The rechargeable battery inside is NOT replaceable. Pls do NOT disassemble the wand and take out the battery.
- This toy produces flashes that may trigger epilepsy in sensitized individuals.
- Always be aware of your surroundings. Only use Wandini where there is space free of objects and other people. Not suitable for children under 3 years of age due to entanglement risks of cords.
- Packaging and instruction must be retained since it contains important information.

FUN IN MOTION TOYS®

Check out our award-winning products!
Visit funinmotiontoys.com



SHASHIBO®



SPIN BALLS®
GLOW



KARMAGAMI®



Manufactured and distributed by
Spinballs, LLC d/b/a Fun In Motion Toys
PO BOX 350573
Fort Lauderdale, FL 33335, USA
www.funinmotiontoys.com



WARNING :

CHOKING HAZARD--Small parts
Not for children under 3 years .

Designed in USA • Made in China



PATENT PENDING

Ages 8+



RELEASE YOUR SECRET POWERS!

Every wizard needs their own wicked cool, magic wand. As soon as you open this box, you will possess new powers. Like any magic wand, you don't control it at first. It controls you. Learn the balance and you'll advance to master wizard level in no time!

EVERYONE WILL WONDER, IS THAT MAGIC?

Create an optical illusion at night with Wandini - a magical levitating LED wand! Whirl, swirl, and twirl - anyone can perform mesmerizing light shows with Wandini. Simply loop Wandini around your middle finger to create an illusion of colorful bright lights floating luminously in the air with your hands. Great for parties, events, dances, and pure entertainment - daytime or nighttime!

APP & VIDEOS

Download our free **FUN IN MOTION TOYS** app for a growing library of instructional videos to learn all the moves and motions, or visit our YouTube channel.



#WANDINI

SHARE THE #WANDINI MAGIC @FuninMotionToys on

Facebook, TikTok, Instagram & YouTube!

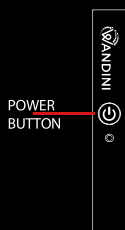


WHAT'S INCLUDED



IF YOU BREAK YOUR STRING

We do offer Wandini replacement string on our website: Funinmotiontoys.com



TURNING ON/OFF

To turn on Wandini, press the power button on the battery cover quickly (you will enter customizing process if you hold it for more than 3 seconds). To turn off, hold the power button down for 3-4 seconds and Wandini will turn off.

FEATURES 22 LIGHT MODES (21 PRESET/1 CUSTOMIZABLE)

Press 1. Rainbow Fade



Press 2. Solid Color - pick a color and it stays there.



Press 3. Rainbow Fade (Fast)



Press 4. Rainbow Strobe



Press 5. Rainbow Ribbon



Press 6. Flame (Red Solid + Yellow Dotted)



Press 7. White Solid



Press 8. White Strobe



Press 9. Dual Ribbon (Red + Blue)



Press 10. Dual Ribbon (Blue + Green)



Press 11. Dual Ribbon (Red + Green)



Press 12. Dual Ribbon (Red + Yellow)



Press 13. Dual Ribbon (Yellow + Green)



Press 14. Dual Ribbon (Yellow + Blue)



Press 15. Red Solid



Press 16. Green Solid



Press 17. Blue Solid



Press 18. Pink Solid



Press 19. Dual Ribbon (Blue + Purple)



Press 20. Triple Ribbon (Purple + Yellow + Green)



Press 21. Dual Ribbon (Blue + White)



Press 22. Triple Ribbon (Red + White + Blue) - Default



Customized Mode. And it will be overwritten if you set the customized mode by yourself.



CUSTOMIZING LIGHT MODE

Create color sets by combining any 3 colors on the color palette (solid red/green/blue/yellow/purple/cyan/white and dotted red/green/blue/yellow/purple/cyan/white). Follow these steps to create a color set.

1. With the light OFF, click and hold the power button for 3 seconds. Release the button and enter the customized mode.
2. You will now see RED, the first color on the color palette.